

Something this precious can be yours...



GEM_{pc}

Accelerated Genetics®





Accelerated Genetics's dairy mating program, GEMpc (Genetic Evaluation and Mating), is a valuable tool that you can personalize to fit your needs. It is designed to aid the producer in sire selection.

GEMpc - The Most Flexible Mating Program Available.

- Immediate On Farm Reports
- Custom Weighted Selection Indexes
- Minimum Culling Levels
- Adjustable Calving Ease Limits (2 ways)
- Adjustable Inbreeding Levels (2 ways)
- Recessive Carrier Elimination
- Adjustable Price Limits on all 3 Choices
- Usage Limits by Units (3 ways)
- Usage Limits by % (each choice) (2 ways)
- Computer Can Select From Over 78,000 Proven Sires or you may Specify List of Bulls
- Cross Breed, if Desired
- RHA <100% can be Eliminated
- Final Adjustments are Easy to Make
- Use Competitor Bulls, if Desired
- Allows Mating by Pedigree



A more secure approach to mating, GEMpc considers six generations of pedigree information, completes recessive match checks on each potential mating, does not accept negative scores, and gives a balanced approach to mating - using ALL of the traits. As a producer, you can emphasize specific traits to more effectively meet your herd goals.

"We've been on the GEMpc program for at least 10 years. Using the mating program has allowed us to focus on key traits when planning to move our herd from a tie-stall facility to a free stall barn. Two or three years before the move, we emphasized feet and legs more, and wanted to add more substance to better fit the free stall life. GEMpc allowed us to easily accomplish these goals. It continues to help us make better purchasing decisions and maintain a lower but more accurate semen inventory."

- Brian Brown

SunBurst Dairy, Belleville, WI

Compatibility To Your System



GEMpc results are able to be exported to PC Dart or Dairy Comp and can be saved as an Excel file for use in almost any computer system.

Farmer friendly, GEMpc now has even more report formats. It gives the option of sorting virgin heifers from cows, sorting by breed, or by date. Results can be viewed as two choices or three per page with varying information given in each format.

*Don Tvede
Vander Eyk Dairy, Ontario, CA*

"I have been using the Accelerated Genetics GEMpc mating service for over five years. I really notice my heifers that are freshening today have fancier udders and more type than I have ever had since I started using A.I. in 1983."

*- Robert Vander Eyk
Vander Eyk Dairy, Ontario, CA*

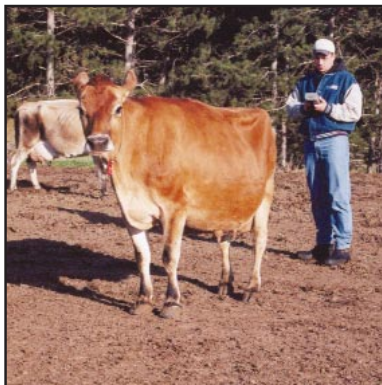
GEMpc uses a full linear scale to mate 18 different traits and is able to utilize a RAP sheet to calculate inbreeding throughout the herd.

Respected for its flexibility and accuracy, GEMpc is used in several countries around the world - England, Brazil, Canada, Chile, Italy, and Mexico to name a few.



"We have used GEMpc on our Guernsey and Brown Swiss herds for many years. We switched from a competitors mating program because the Accelerated Genetics program is designed to keep inbreeding to a minimum. Now with six generations of inbreeding calculations on the sires in the pedigree, GEM is the leader in mating programs."

*- Johnny Legg
Turnpike Dairy, Inc., Palm City, FL*



Professional Analysts Serving You

The Accelerated Genetics Herd Analysts are professionally trained full-time employees who will work around your schedule. You can have your cows mated as often as your herd demands. Heifers can be mated manually or by pedigree - the choice is yours.

GEMpc results save time. When it is time to breed each cow, it will only take seconds to look at the printed results to make your decision.

Herd Analysis Application

Name: _____

Customer#: _____ District#: _____

Farm Name: _____

Address: _____

City: _____ State: _____ Zip: _____

Telephone: _____ Email: _____

Directions to Farm: _____

Best Time to Analyze: _____

Number of Cows: _____ Number of Heifers: _____

Breed: _____

Accelerated Genetics Representative: _____



"I have been in the PACE program for more than three years and have also been using the Accelerated Genetics mating program, GEMpc, for over three years. I'm very satisfied with this program where I have seen the type of heifers we are getting and the uniformity of them. They have very good udders and feet and legs and also are great milk producers."

- Jim Wilson

Wilson Dairy, Chino, CA

80143

Innovation Breeds Excellence®

800.451.9275

www.accelgen.com

info@accelgen.com

Accelerated Genetics®

