

HUDSON - 014GU00297

Fortress X Velour
 GUUSA000000604713
 Jens Gold Fort Hudson
 aAa: 216345 DMS: 123



USDA SIRE EVALUATION Sire Summary - (12/11)

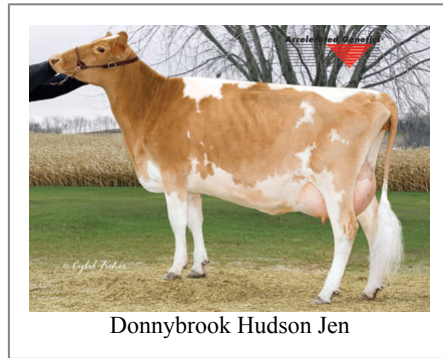
	150 Daus	77 Herds
Milk	914	91%R
Protein	23	-0.04
Fat	18	-0.12
Net Merit	\$114	
Fluid Merit	\$133	
Cheese Merit	\$99	

USDA SIRE EVALUATION Type Summary - (12/11)

	76 Daus	42 Herds		
PTAT	-0.1	86%R	PTI	75
UDC	-0.6		FLC	1.4
PL	0.1	68%		
SCS	3.04	82%		
DPR	-0.2	63%		
IB	7			



Dairyman Hudson Rosa



Donnybrook Hudson Jen

Information Provided By:



E10890 Penny Lane
 Baraboo, WI. 52913
 1.800.451.9275 (toll free)
 608.356.8357 (local & international)
 info@accelgen.com
 www.accelgen.com

AGCC Linear Profile - December 2011

	-3	-2	-1	+1	+2	+3	
Stature						0.90	Tall
Strength						0.10	Strong
Body Depth						0.70	Deep
Dairy Form						1.80	Open Rib
Rump Angle						1.00	Sloped
Thurl Width						0.20	Wide
Rear Leg Set						-0.90	Posty
Rear Leg Rear View						1.50	Straight
Foot Angle						-0.10	Low
Fore Attachments						-1.80	Loose
Rear Udder Height						0.20	High
Rear Udder Width						0.40	Wide
Udder Cleft						0.40	Strong
Udder Depth						-1.30	Deep
Front Teat Placement						-1.60	Wide
Teat Length						1.30	Long