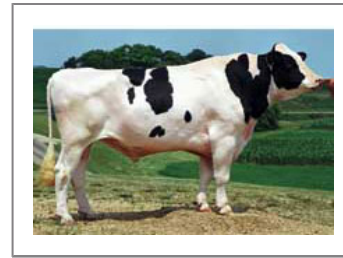


# LON - 014HO03217

Altawade X Ethan\*BL  
HOUSA000121149482

Wil-Hart Wade Lon-ET EX-94  
aAa: 234165 DMS: 234;345



## USDA SIRE GENOMIC EVALUATION Sire Summary - (12/11)

	4456 Daus	963 Herds
Milk	<b>500</b>	<b>99%R</b>
Protein	<b>19</b>	<b>0.01</b>
Fat	<b>-26</b>	<b>-0.17</b>
Net Merit	<b>\$149</b>	
Fluid Merit	<b>\$131</b>	
Cheese Merit	<b>\$171</b>	

## USDA SIRE GENOMIC EVALUATION Type Summary - (12/11)

	824 Daus	388 Herds		
PTAT	<b>1.55</b>	<b>98%R</b>	TPI	<b>1656</b>
UDC	<b>1.75</b>		FLC	<b>2.04</b>

<b>Calving Ease</b>	<b>CE%</b>	<b>Rel</b>	<b>Calvings</b>
Service Sire	7%	99%	9740
Daughter	7%	97%	5650
<b>Stillbirth</b>	<b>SB%</b>	<b>Rel</b>	<b>Calvings</b>
Service Sire	8.9%	93%	5153
Daughter	7.1%	95%	4515

PL	1.7	98%	Milkout	Avg
SCS	2.92	99%	Disposition	Avg
DPR	0.5	98%		
IB	5.8			



Mercier Lon Beauty



Costaview Lon 17882



Costaview Lon 17808

## Information Provided By:

**Accelerated Genetics®**



E10890 Penny Lane  
Baraboo, WI. 52913

1.800.451.9275 (toll free)

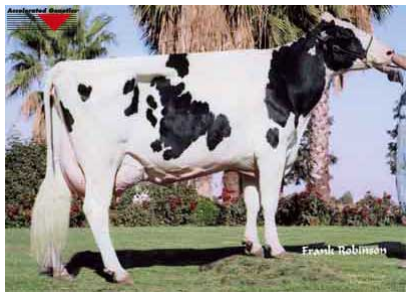
608.356.8357 (local & international)

info@accelgen.com

www.accelgen.com

## Holstein/USDA Genomic Linear Profile - December 2011

	-3	-2	-1	+1	+2	+3	
Stature						1.87	Tall
Strength						1.06	Strong
Body Depth						0.49	Deep
Dairy Form						0.07	Open Rib
Rump Angle						0.85	Sloped
Thurl Width						0.86	Wide
Rear Leg Set						-1.46	Posty
Rear Leg Rear View						2.68	Straight
Foot Angle						2.06	Steep
Foot & Leg Score						1.89	High
Fore Attachments						1.87	Strong
Rear Udder Height						1.11	High
Rear Udder Width						1.75	Wide
Udder Cleft						2.85	Strong
Udder Depth						2.36	Shallow
Front Teat Placement						3.39	Close
Rear Teat Placement						3.67	Close
Teat Length						0.01	Long



Foster Farms Lon



2nd Lactation: Vliet View Lon



1st Lactation: Vliet View Lon