

# MATT - 014HO03738

Mtoto X Hunter  
 HOUSA000129766481  
 Barbi-Lyn M Mattison-ET VG-89  
 aAa: 312456 DMS: 345;135



## IB/MACE-USA Sire Summary - (12/11)

	8119 Daus	1807 Herds
Milk	1197	99%R
Protein	18	-0.07
Fat	20	-0.09
Net Merit	\$102	
Fluid Merit	\$148	
Cheese Merit	\$44	

## IB/MACE-USA Type Summary - (12/11)

	2146 Daus	817 Herds		
PTAT	1.28	98%R	TPI	1537
UDC	0.69		FLC	0.1

<b>Calving Ease</b>	<b>CE%</b>	<b>Rel</b>	<b>Calvings</b>
Service Sire	6%	99%	17674
Daughter	6%	98%	0
<b>Stillbirth</b>	<b>SB%</b>	<b>Rel</b>	<b>Calvings</b>
Service Sire	9.4%	98%	14117
Daughter	6.9%	98%	0

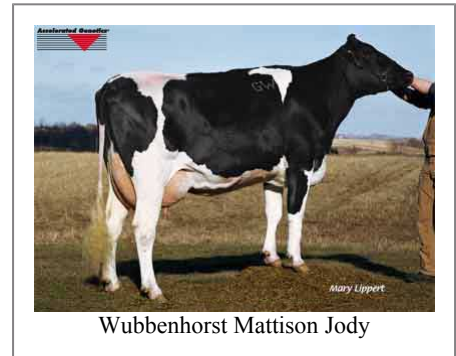
PL	-1.7	98%	Milkout	Slow
SCS	2.79	99%	Disposition	Avg
DPR	-0.4	98%		
IB	6.7			



Country-Aire Matt 5330



Jemdale Matt 979



Wubbenhorst Mattison Jody

## Information Provided By:

Accelerated Genetics®



E10890 Penny Lane  
 Baraboo, WI. 52913  
 1.800.451.9275 (toll free)  
 608.356.8357 (local & international)  
 info@accelgen.com  
 www.accelgen.com

## Holstein/USA Genomic Linear Profile - December 2011

	-3	-2	-1	+1	+2	+3	
Stature						1.12	Tall
Strength						1.14	Strong
Body Depth						1.43	Deep
Dairy Form						1.70	Open Rib
Rump Angle						0.89	Sloped
Thurl Width						1.81	Wide
Rear Leg Set						0.35	Sickle
Rear Leg Rear View						-0.25	Hock-in
Foot Angle						0.09	Steep
Foot & Leg Score						0.30	High
Fore Attachments						0.93	Strong
Rear Udder Height						1.36	High
Rear Udder Width						2.07	Wide
Udder Cleft						2.86	Strong
Udder Depth						-0.48	Deep
Front Teat Placement						1.95	Close
Rear Teat Placement						2.61	Close
Teat Length						-0.20	Short