

MARION - 014HO03831

Addison X Altaformation
 HOUSA000130153294
 Veazland Marion-ET EX-94
 aAa: 312465 DMS: 345;135



IB/MACE-USA Sire Summary - (12/11)

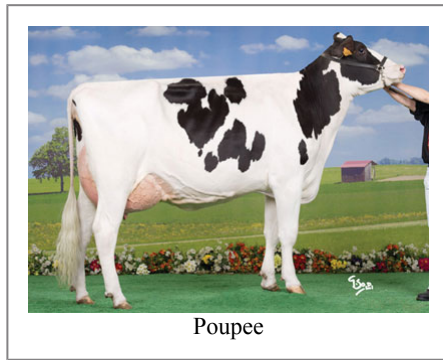
	21425 Daus	6560 Herds
Milk	2368	99%R
Protein	50	-0.08
Fat	54	-0.12
Net Merit	\$199	
Fluid Merit	\$276	
Cheese Merit	\$122	

IB/MACE-USA Type Summary - (12/11)

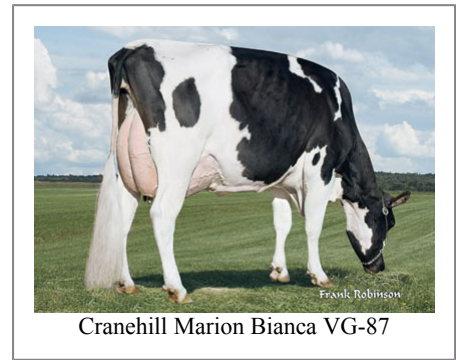
	9995 Daus	4237 Herds		
PTAT	0.89	99%R	TPI	1646
UDC	0.55		FLC	0.68

Calving Ease	CE%	Rel	Calvings
Service Sire	9%	99%	37618
Daughter	9%	99%	0
Stillbirth	SB%	Rel	Calvings
Service Sire	7.6%	99%	32033
Daughter	8.2%	99%	0

PL	-1.6	99%	Milkout	Avg
SCS	2.96	99%	Disposition	> Avg
DPR	-2.5	99%		
IB	5.5			



Poupee



Cranehill Marion Bianca VG-87

Information Provided By:



E10890 Penny Lane
 Baraboo, WI. 52913

1.800.451.9275 (toll free)

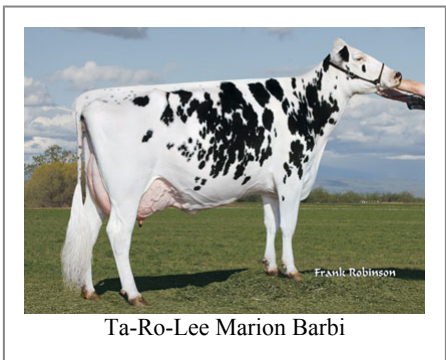
608.356.8357 (local & international)

info@accelgen.com

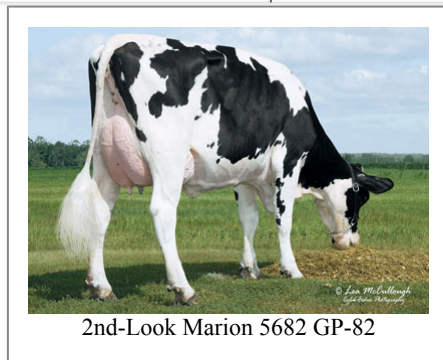
www.accelgen.com

Holstein/USA Genomic Linear Profile - December 2011

	-3	-2	-1	+1	+2	+3	
Stature						1.55	Tall
Strength						1.81	Strong
Body Depth						1.61	Deep
Dairy Form						1.42	Open Rib
Rump Angle						2.74	Sloped
Thurl Width						2.60	Wide
Rear Leg Set						-0.95	Posty
Rear Leg Rear View						0.68	Straight
Foot Angle						1.54	Steep
Foot & Leg Score						0.23	High
Fore Attachments						0.35	Strong
Rear Udder Height						2.20	High
Rear Udder Width						2.87	Wide
Udder Cleft						0.96	Strong
Udder Depth						-0.91	Deep
Front Teat Placement						1.41	Close
Rear Teat Placement						1.59	Close
Teat Length						1.38	Long



Ta-Ro-Lee Marion Barbi



2nd-Look Marion 5682 GP-82



Regancrest-ALH M Devita VG-85



2nd Lactation: Longrow Marion April EX-90 EX-90-MS



Welcome Marion Winn-ET VG-88



Kemdtway Marion Risky VG-88