

HARRY - 014HO03913

Bw Marshall X Celsius
HOUSA000060083723

Walhowdon Marshall Harry-ET EX-95
aAa: 234165 DMS: 246;234



IB/MACE-USA Sire Summary - (12/11)

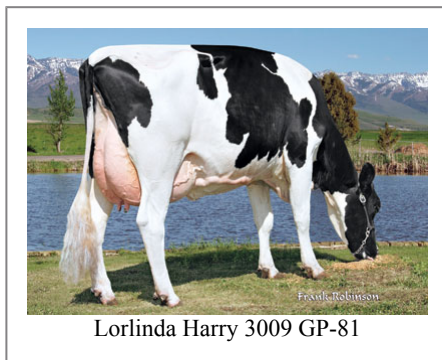
	15034 Daus	3469 Herds
Milk	1253	99%R
Protein	41	0.01
Fat	22	-0.09
Net Merit	\$-15	
Fluid Merit	\$-15	
Cheese Merit	\$-1	

IB/MACE-USA Type Summary - (12/11)

	3611 Daus	1530 Herds		
PTAT	1.32	98%R	TPI	1496
UDC	1.09		FLC	1.76

Calving Ease	CE%	Rel	Calvings
Service Sire	7%	99%	22081
Daughter	9%	98%	0
Stillbirth	SB%	Rel	Calvings
Service Sire	7.3%	99%	17757
Daughter	15.2%	98%	0

PL	-2.7	98%	Milkout	Avg
SCS	3.08	99%	Disposition	> Avg
DPR	-3.1	98%		
IB	6.3			



Lorlinda Harry 3009 GP-81



Vista-LC Harry 5455 GP-81

Information Provided By:



E10890 Penny Lane
Baraboo, WI. 52913

1.800.451.9275 (toll free)

608.356.8357 (local & international)

info@accelgen.com

www.accelgen.com

Holstein/USDA Genomic Linear Profile - December 2011

	-3	-2	-1	+1	+2	+3	
Stature						1.93	Tall
Strength						1.12	Strong
Body Depth						1.00	Deep
Dairy Form						0.92	Open Rib
Rump Angle						1.93	Sloped
Thurl Width						0.26	Wide
Rear Leg Set						-1.41	Posty
Rear Leg Rear View						1.55	Straight
Foot Angle						2.54	Steep
Foot & Leg Score						1.51	High
Fore Attachments						2.23	Strong
Rear Udder Height						1.40	High
Rear Udder Width						2.11	Wide
Udder Cleft						-0.05	Weak
Udder Depth						0.67	Shallow
Front Teat Placement						0.76	Close
Rear Teat Placement						0.84	Close
Teat Length						2.68	Long



Lorlinda Harry 3093 GP-81



Left: Lorlinda Harry 3021 GP-81 Right: Lorlinda Harry 3009 GP-81



Left: Ruchi Harry 806 Right: Wiedenfeld Harry W780



Weise Harry 2663



Lorlinda Harry 3009 GP-81



Weise Harry 2663