

ONWARD - 014HO04511

Morty X Outside
 HOUSA000134361093
 Andacres Morty Onward VG-88
 aAa: 423651 DMS: 234;345

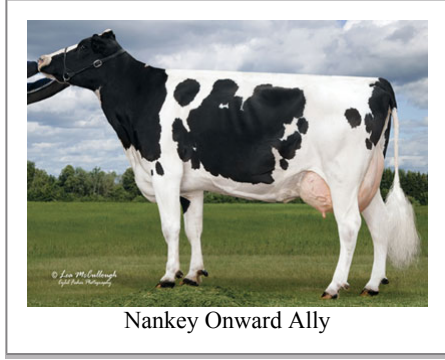


IB/MACE-USA Sire Summary - (12/11)

	1907 Daus	775 Herds
Milk	1576	99%R
Protein	36	-0.04
Fat	79	0.08
Net Merit	\$339	
Fluid Merit	\$388	
Cheese Merit	\$296	

IB/MACE-USA Type Summary - (12/11)

	578 Daus	334 Herds		
PTAT	1.32	97%R	TPI	1784
UDC	0.93		FLC	0.97
Calving Ease	CE%	Rel	Calvings	
Service Sire	10%	99%	7483	
Daughter	9%	95%	0	
Stillbirth	SB%	Rel	Calvings	
Service Sire	7.1%	97%	6685	
Daughter	6.7%	93%	0	
PL	-0.1	85%	Milkout	> Avg
SCS	3.06	97%	Disposition	Avg
DPR	-1.1	91%		
IB	6.1			



Nankey Onward Ally



2nd Lactation: Roehl-Acres Loyal Limo VG-85

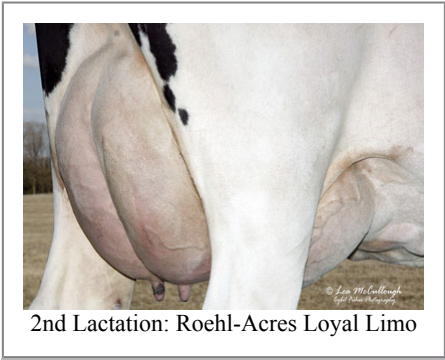
Information Provided By:



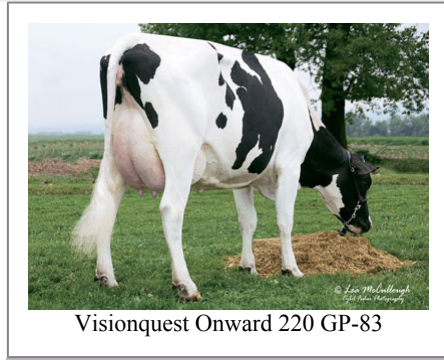
E10890 Penny Lane
 Baraboo, WI. 52913
 1.800.451.9275 (toll free)
 608.356.8357 (local & international)
 info@accelgen.com
 www.accelgen.com

Holstein/USDA Genomic Linear Profile - December 2011

	-3	-2	-1	+1	+2	+3	
Stature				█			0.66 Tall
Strength				█			0.92 Strong
Body Depth				█			0.50 Deep
Dairy Form				█			0.72 Open Rib
Rump Angle				█			1.11 Sloped
Thurl Width				█			1.18 Wide
Rear Leg Set			█				-1.83 Posty
Rear Leg Rear View				█			0.93 Straight
Foot Angle				█			1.38 Steep
Foot & Leg Score				█			0.66 High
Fore Attachments				█			0.63 Strong
Rear Udder Height				█			3.16 High
Rear Udder Width				█			3.39 Wide
Udder Cleft			█				-0.18 Weak
Udder Depth			█				-0.07 Deep
Front Teat Placement				█			0.31 Close
Rear Teat Placement				█			0.13 Close
Teat Length				█			0.94 Long



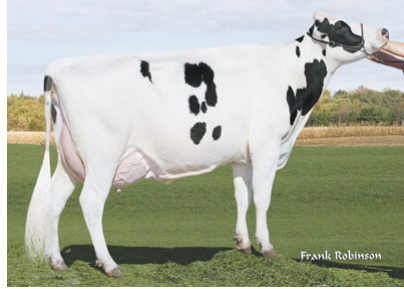
2nd Lactation: Roehl-Acres Loyal Limo



Visionquest Onward 220 GP-83



Visionquest Onward 216



2nd Lactation: DeJong Onward 1599



Zuppan Onward 2037



Gold Dust 7230