

PHIL G - 014HO04670

Pippen X Rudolph
 HOUSA000134592413
 L-L-M-Dairy Phil G-ET VG-85
 aAa: 162534 DMS: 135;561

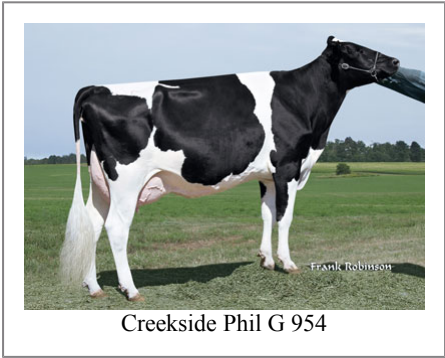
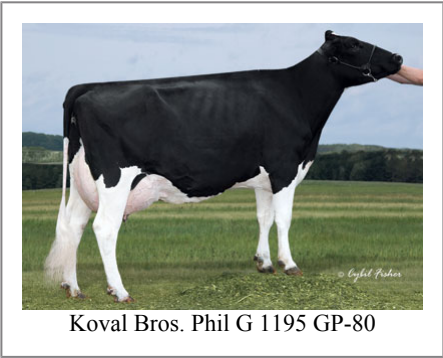
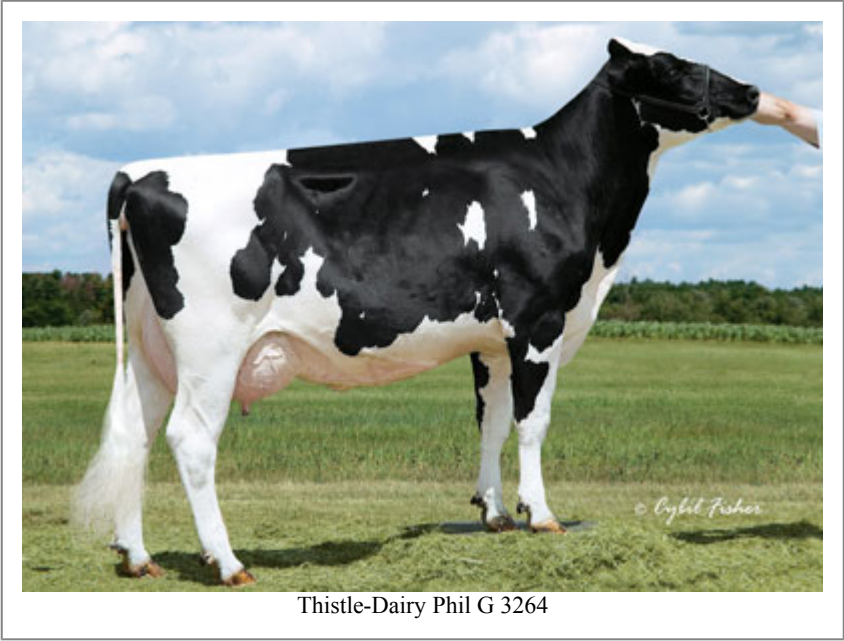


USDA SIRE GENOMIC EVALUATION Sire Summary - (12/11)

	632 Daus	206 Herds
Milk	605	97%R
Protein	18	0
Fat	22	0
Net Merit	\$334	
Fluid Merit	\$313	
Cheese Merit	\$349	

USDA SIRE GENOMIC EVALUATION Type Summary - (12/11)

	112 Daus	69 Herds		
PTAT	1.12	92%R	TPI	1739
UDC	1.49		FLC	0.94
Calving Ease	CE%	Rel	Calvings	
Service Sire	7%	99%	6449	
Daughter	8%	86%	528	
Stillbirth	SB%	Rel	Calvings	
Service Sire	8.1%	98%	5593	
Daughter	9.3%	81%	453	
PL	3.5	84%	Milkout	Avg
SCS	2.72	94%	Disposition	Avg
DPR	-0.3	82%		
IB	5.7			



Information Provided By:



E10890 Penny Lane
 Baraboo, WI. 52913
 1.800.451.9275 (toll free)
 608.356.8357 (local & international)
 info@accelgen.com
 www.accelgen.com

	-3	-2	-1	+1	+2	+3	
Stature						0.31	Tall
Strength						-0.12	Frail
Body Depth						-0.26	Shallow
Dairy Form						-0.04	Tight Rib
Rump Angle						0.16	Sloped
Thurl Width						0.74	Wide
Rear Leg Set						-0.41	Posty
Rear Leg Rear View						0.54	Straight
Foot Angle						0.70	Steep
Foot & Leg Score						1.28	High
Fore Attachments						2.06	Strong
Rear Udder Height						1.39	High
Rear Udder Width						1.78	Wide
Udder Cleft						1.14	Strong
Udder Depth						1.66	Shallow
Front Teat Placement						1.68	Close
Rear Teat Placement						1.65	Close
Teat Length						-1.08	Short



Milking-It-Dairy Phil G