

# CHAMP - 014HO04766

Champion X Altaformation  
 HOUSA000135056079  
 Roylane Champion Champ-ET GP-84  
 aAa: 342561 DMS: 561;135



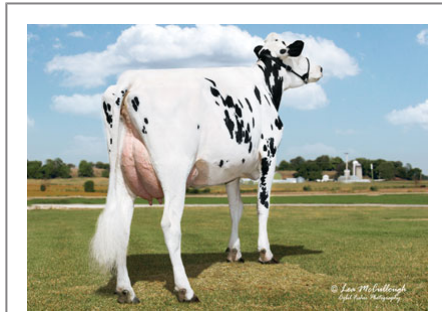
### USDA SIRE GENOMIC EVALUATION Sire Summary - (12/11)

	162 Daus	81 Herds
Milk	1222	95%R
Protein	27	-0.04
Fat	43	-0.01
Net Merit	\$419	
Fluid Merit	\$437	
Cheese Merit	\$394	

### USDA SIRE GENOMIC EVALUATION Type Summary - (12/11)

	126 Daus	69 Herds		
PTAT	1.53	92%R	TPI	1831
UDC	1.25		FLC	1
<b>Calving Ease</b>	<b>CE%</b>	<b>Rel</b>	<b>Calvings</b>	
Service Sire	5%	99%	7044	
Daughter	6%	79%	232	
<b>Stillbirth</b>	<b>SB%</b>	<b>Rel</b>	<b>Calvings</b>	
Service Sire	6.9%	98%	5886	
Daughter	6.1%	69%	192	

PL	2.8	84%	Milkout	> Avg
SCS	2.77	90%	Disposition	Avg
DPR	-0.6	81%		
IB	6			



Tamarack-Valley Champ Caitlin GP-83



2nd Lactation: Fox Ridge Champ 2363 VG-85

### Information Provided By:



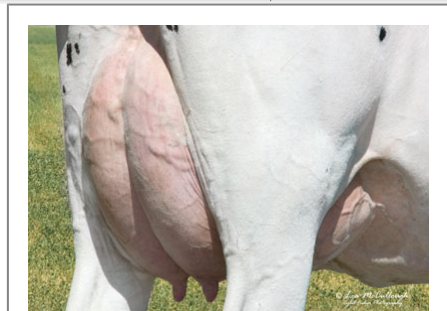
E10890 Penny Lane  
 Baraboo, WI. 52913  
 1.800.451.9275 (toll free)  
 608.356.8357 (local & international)  
 info@accelgen.com  
 www.accelgen.com

### Holstein/USDA Genomic Linear Profile - December 2011

	-3	-2	-1	+1	+2	+3	
Stature							1.20 Tall
Strength							-0.64 Frail
Body Depth							0.00 Deep
Dairy Form							2.52 Open Rib
Rump Angle							1.63 Sloped
Thurl Width							1.24 Wide
Rear Leg Set							-0.50 Posty
Rear Leg Rear View							1.10 Straight
Foot Angle							0.05 Steep
Foot & Leg Score							1.49 High
Fore Attachments							0.69 Strong
Rear Udder Height							2.04 High
Rear Udder Width							2.38 Wide
Udder Cleft							1.35 Strong
Udder Depth							1.04 Shallow
Front Teat Placement							1.64 Close
Rear Teat Placement							1.59 Close
Teat Length							-2.18 Short



Dellen Champ Judy GP-81



Tamarack-Valley Champ Caitlin



Bailie Champ 3333



Valley View Champ 2197



Tamarack-Valley Champ Caitlin GP-83