

# PAXTON - 014HO04876

O Man X Rudolph  
 HOUSA000135393745  
 All-Riehl Paxton-ET  
 aAa: 213456 DMS: 345



## USDA SIRE GENOMIC EVALUATION Sire Summary - (12/11)

	94 Daus	69 Herds
Milk	868	93%R
Protein	35	0.03
Fat	23	-0.03
Net Merit	\$432	
Fluid Merit	\$384	
Cheese Merit	\$483	

## USDA SIRE GENOMIC EVALUATION Type Summary - (12/11)

	82 Daus	63 Herds		
PTAT	0.59	90%R	TPI	1878
UDC	0.15		FLC	0.73

<b>Calving Ease</b>	<b>CE%</b>	<b>Rel</b>	<b>Calvings</b>
Service Sire	6%	96%	2343
Daughter	7%	77%	144
<b>Stillbirth</b>	<b>SB%</b>	<b>Rel</b>	<b>Calvings</b>
Service Sire	7.3%	86%	2146
Daughter	6.8%	69%	129

PL	3.8	83%	Milkout	Avg
SCS	2.75	88%	Disposition	Avg
DPR	2.9	79%		
IB	6.1			



Vellma Farms Paxton Brandi GP-82



Donamara Paxton Sedona

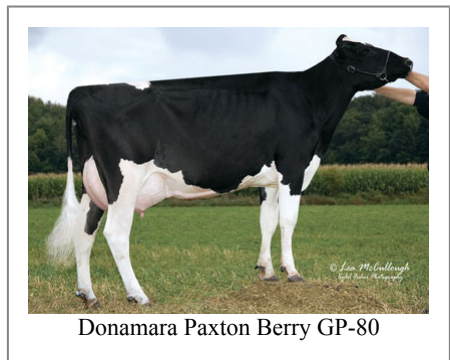
### Information Provided By:



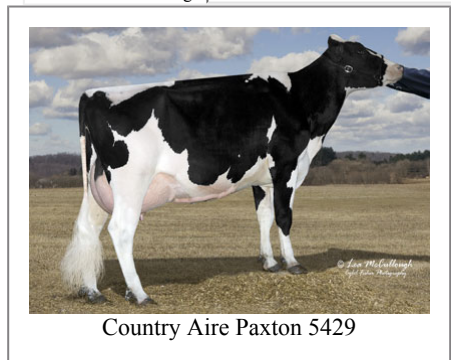
E10890 Penny Lane  
 Baraboo, WI. 52913  
 1.800.451.9275 (toll free)  
 608.356.8357 (local & international)  
 info@accelgen.com  
 www.accelgen.com

## Holstein/USDA Genomic Linear Profile - December 2011

	-3	-2	-1	+1	+2	+3	
Stature							2.56 Tall
Strength							1.62 Strong
Body Depth							1.23 Deep
Dairy Form							-0.12 Tight Rib
Rump Angle							3.48 Sloped
Thurl Width							-0.50 Narrow
Rear Leg Set							-0.19 Posty
Rear Leg Rear View							0.21 Straight
Foot Angle							1.05 Steep
Foot & Leg Score							0.85 High
Fore Attachments							0.88 Strong
Rear Udder Height							0.59 High
Rear Udder Width							-0.31 Narrow
Udder Cleft							-2.22 Weak
Udder Depth							1.26 Shallow
Front Teat Placement							-1.12 Wide
Rear Teat Placement							-2.38 Wide
Teat Length							-0.61 Short



Donamara Paxton Berry GP-80



Country Aire Paxton 5429