

JAKE - 014HO04916

O Man X Bw Marshall
 HOUSA000061643016
 Lot-O-Rok Oman Jake-ET EX-91
 aAa: 354126 DMS: 345;135



USDA SIRE GENOMIC EVALUATION Sire Summary - (12/11)

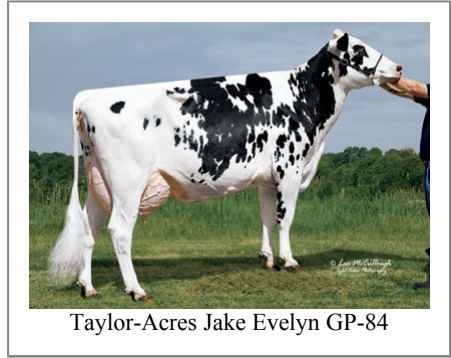
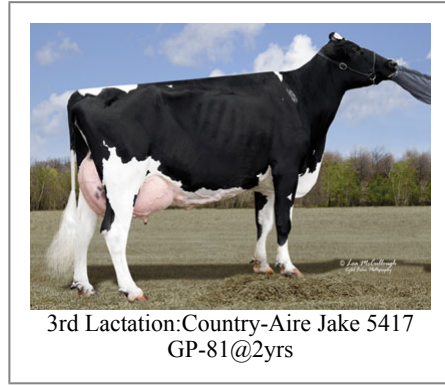
	93 Daus	64 Herds
Milk	1060	93%R
Protein	43	0.04
Fat	68	0.11
Net Merit	\$425	
Fluid Merit	\$389	
Cheese Merit	\$475	

USDA SIRE GENOMIC EVALUATION Type Summary - (12/11)

	70 Daus	51 Herds		
PTAT	0.81	90%R	TPI	1883
UDC	0.61		FLC	1.52

Calving Ease	CE%	Rel	Calvings
Service Sire	5%	99%	9357
Daughter	7%	78%	125
Stillbirth	SB%	Rel	Calvings
Service Sire	9.1%	98%	7745
Daughter	9.5%	72%	116

PL	1.3	82%	Milkout	Avg
SCS	2.98	87%	Disposition	Avg
DPR	0.5	77%		
IB	6.7			



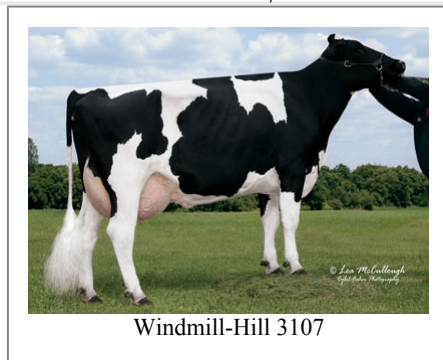
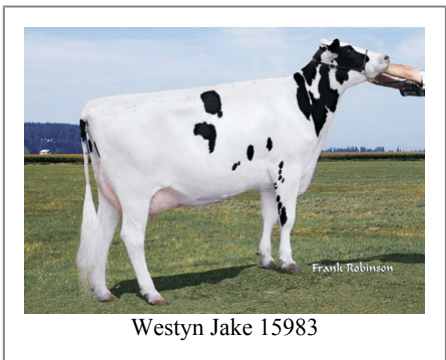
Information Provided By:



E10890 Penny Lane
 Baraboo, WI. 52913
 1.800.451.9275 (toll free)
 608.356.8357 (local & international)
 info@accelgen.com
 www.accelgen.com

Holstein/USDA Genomic Linear Profile - December 2011

	-3	-2	-1	+1	+2	+3	
Stature						0.94	Tall
Strength						1.28	Strong
Body Depth						1.17	Deep
Dairy Form						0.39	Open Rib
Rump Angle						0.21	Sloped
Thurl Width						-0.36	Narrow
Rear Leg Set						-1.41	Posty
Rear Leg Rear View						1.74	Straight
Foot Angle						1.72	Steep
Foot & Leg Score						1.35	High
Fore Attachments						1.49	Strong
Rear Udder Height						0.69	High
Rear Udder Width						1.26	Wide
Udder Cleft						-0.88	Weak
Udder Depth						0.63	Shallow
Front Teat Placement						0.97	Close
Rear Teat Placement						-0.13	Wide
Teat Length						0.07	Long





Dairylane Jake 17



Dairyland Jake 17



Country-Aire Jake 5417



Dairyland Jake 69