

KRAMER - 014HO04924

O Man X Altahershel
 HOUSA000061802729
 Bomaz Oman Kramer 561-ET VG-85
 aAa: 234165 DMS: 234;345



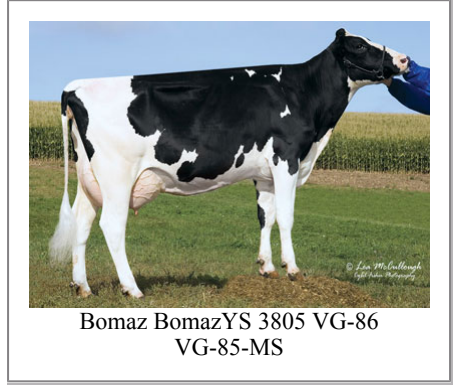
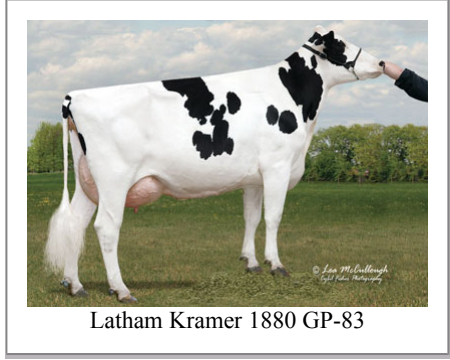
USDA SIRE GENOMIC EVALUATION Sire Summary - (12/11)

	80 Daus	58 Herds
Milk	1584	92%R
Protein	40	-0.03
Fat	59	0
Net Merit	\$494	
Fluid Merit	\$516	
Cheese Merit	\$473	

USDA SIRE GENOMIC EVALUATION Type Summary - (12/11)

	78 Daus	56 Herds		
PTAT	1.54	90%R	TPI	1963
UDC	0.75		FLC	2.73
Calving Ease	CE%	Rel	Calvings	
Service Sire	6%	99%	7020	
Daughter	8%	76%	151	
Stillbirth	SB%	Rel	Calvings	
Service Sire	8%	97%	5701	
Daughter	6%	68%	132	

PL	3.4	81%	Milkout	Avg
SCS	2.89	87%	Disposition	> Avg
DPR	-0.3	77%		
IB	6.1			



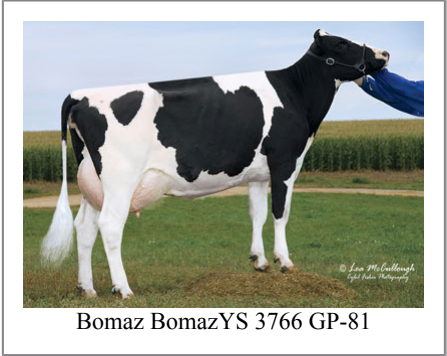
Information Provided By:



E10890 Penny Lane
 Baraboo, WI. 52913
 1.800.451.9275 (toll free)
 608.356.8357 (local & international)
 info@accelgen.com
 www.accelgen.com

Holstein/USDA Genomic Linear Profile - December 2011

	-3	-2	-1	+1	+2	+3	
Stature						1.74	Tall
Strength						1.06	Strong
Body Depth						1.06	Deep
Dairy Form						1.13	Open Rib
Rump Angle						1.17	Sloped
Thurl Width						1.34	Wide
Rear Leg Set						-1.56	Posty
Rear Leg Rear View						2.52	Straight
Foot Angle						3.14	Steep
Foot & Leg Score						2.78	High
Fore Attachments						1.91	Strong
Rear Udder Height						0.79	High
Rear Udder Width						-0.35	Narrow
Udder Cleft						-0.69	Weak
Udder Depth						1.47	Shallow
Front Teat Placement						0.21	Close
Rear Teat Placement						-0.51	Wide
Teat Length						-1.33	Short





Koval Bros Dairy Kramer 1235 GP-82



Poeschel Kramer 38