

# MAN-O-MAN - 014HO04929

O Man X Altaaron  
 HOUSA000135746776  
 Long-Langs Oman Oman-ET VG-85  
 aAa: 243165 DMS: 234



### USDA SIRE GENOMIC EVALUATION Sire Summary - (12/11)

	107 Daus	67 Herds
Milk	1277	94%R
Protein	67	0.1
Fat	70	0.09
Net Merit	\$631	
Fluid Merit	\$533	
Cheese Merit	\$757	

### USDA SIRE GENOMIC EVALUATION Type Summary - (12/11)

	103 Daus	64 Herds		
PTAT	1.83	91%R	TPI	2206
UDC	1.4		FLC	2
<b>Calving Ease</b>	<b>CE%</b>	<b>Rel</b>	<b>Calvings</b>	
Service Sire	5%	97%	2467	
Daughter	6%	87%	149	
<b>Stillbirth</b>	<b>SB%</b>	<b>Rel</b>	<b>Calvings</b>	
Service Sire	6.5%	91%	2307	
Daughter	6.7%	84%	131	
PL	3.1	83%	Milkout	Avg
SCS	2.96	88%	Disposition	Avg
DPR	0.8	79%		
IB	6.1			



Man-O-Man Heifers



Freeman Creek Man-O-Man 762 VG-88

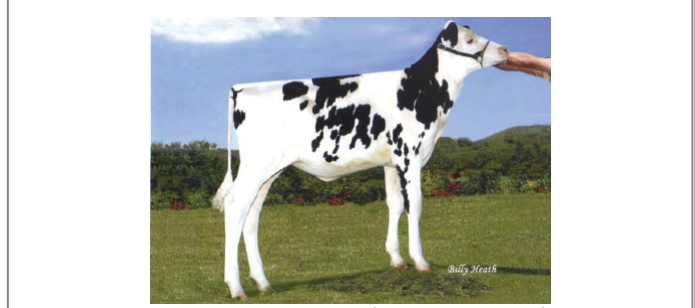
### Information Provided By:



E10890 Penny Lane  
 Baraboo, WI. 52913  
 1.800.451.9275 (toll free)  
 608.356.8357 (local & international)  
 info@accelgen.com  
 www.accelgen.com

### Holstein/USDA Genomic Linear Profile - December 2011

	-3	-2	-1	+1	+2	+3	
Stature							2.53 Tall
Strength							1.12 Strong
Body Depth							1.12 Deep
Dairy Form							1.47 Open Rib
Rump Angle							-0.03 High Pins
Thurl Width							1.88 Wide
Rear Leg Set							-1.01 Posty
Rear Leg Rear View							1.73 Straight
Foot Angle							2.91 Steep
Foot & Leg Score							1.82 High
Fore Attachments							0.83 Strong
Rear Udder Height							2.38 High
Rear Udder Width							2.15 Wide
Udder Cleft							2.28 Strong
Udder Depth							1.20 Shallow
Front Teat Placement							1.04 Close
Rear Teat Placement							1.76 Close
Teat Length							0.42 Long



Ms. C-Haven Oman Kool-Sold for \$76000 Canadian\$ at the Royal



Pebble Knolls Man-O-Man 5125 VG-86 88-Mam



Burnside Man-O-Man 3055 VG-88



Misty Springs ManOMan Satin-Sold for \$32000 Canadian\$ at the Royal



Freeman Creek Man-O-Man 762



DeJong Man-O-Man 211 VG-85