

# ROD - 014H004953

Titanic X Bw Marshall  
 HOUSA000061556923  
 Shadycrest-H Titanic Rod-ET EX-90  
 aAa: 312456 DMS: 126;123



### USDA SIRE GENOMIC EVALUATION Sire Summary - (12/11)

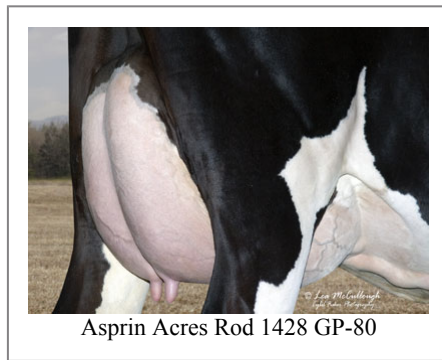
	94 Daus	63 Herds
Milk	779	93%R
Protein	27	0.01
Fat	37	0.03
Net Merit	\$132	
Fluid Merit	\$125	
Cheese Merit	\$148	

### USDA SIRE GENOMIC EVALUATION Type Summary - (12/11)

	92 Daus	61 Herds		
PTAT	1.46	91%R	TPI	1629
UDC	0.79		FLC	2
<b>Calving Ease</b>	<b>CE%</b>	<b>Rel</b>	<b>Calvings</b>	
Service Sire	9%	96%	2782	
Daughter	9%	76%	129	
<b>Stillbirth</b>	<b>SB%</b>	<b>Rel</b>	<b>Calvings</b>	
Service Sire	10.5%	84%	1619	
Daughter	9.1%	70%	131	
PL	-0.8	81%	Milkout	Avg
SCS	3.04	87%	Disposition	Avg
DPR	-0.9	78%		
IB	6.2			



Asprin Acres Rod 1428 GP-80



Asprin Acres Rod 1428 GP-80

### Information Provided By:

**Accelerated Genetics®**



E10890 Penny Lane  
 Baraboo, WI. 52913  
 1.800.451.9275 (toll free)  
 608.356.8357 (local & international)  
 info@accelgen.com  
 www.accelgen.com

### Holstein/USDA Genomic Linear Profile - December 2011

	-3	-2	-1	+1	+2	+3	
Stature						1.85	Tall
Strength						0.90	Strong
Body Depth						1.43	Deep
Dairy Form						1.99	Open Rib
Rump Angle						-0.57	High Pins
Thurl Width						0.59	Wide
Rear Leg Set						-0.21	Posty
Rear Leg Rear View						2.17	Straight
Foot Angle						2.32	Steep
Foot & Leg Score						2.05	High
Fore Attachments						0.86	Strong
Rear Udder Height						1.09	High
Rear Udder Width						2.29	Wide
Udder Cleft						1.03	Strong
Udder Depth						0.38	Shallow
Front Teat Placement						0.44	Close
Rear Teat Placement						0.32	Close
Teat Length						1.45	Long