

DOTSON - 014H004956

O Man X Durham
 HOUSA000135691067
 Tomlu Oman Dotson-ET EX-92
 aAa: 312456 DMS: 456;345



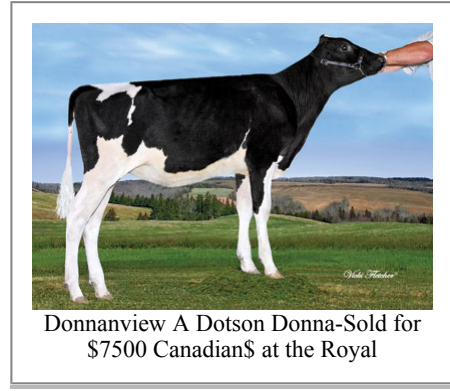
USDA SIRE GENOMIC EVALUATION Sire Summary - (12/11)

	110 Daus	73 Herds
Milk	1659	94%R
Protein	51	0
Fat	41	-0.07
Net Merit	\$333	
Fluid Merit	\$341	
Cheese Merit	\$339	

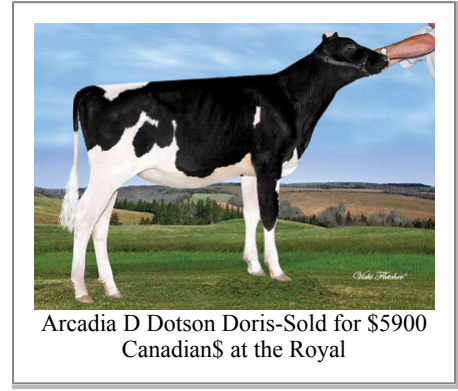
USDA SIRE GENOMIC EVALUATION Type Summary - (12/11)

	93 Daus	65 Herds		
PTAT	0.91	91%R	TPI	1808
UDC	-0.15		FLC	1.88
Calving Ease	CE%	Rel	Calvings	
Service Sire	4%	99%	8972	
Daughter	6%	76%	160	
Stillbirth	SB%	Rel	Calvings	
Service Sire	5.9%	98%	7637	
Daughter	7.2%	68%	158	

PL	0.9	82%	Milkout	Avg
SCS	3.06	89%	Disposition	Avg
DPR	0.3	78%		
IB	6.2			



Donnanview A Dotson Donna-Sold for \$7500 Canadian\$ at the Royal



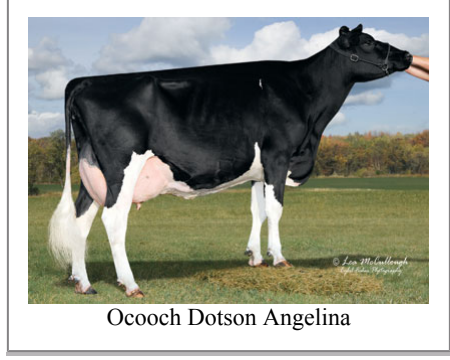
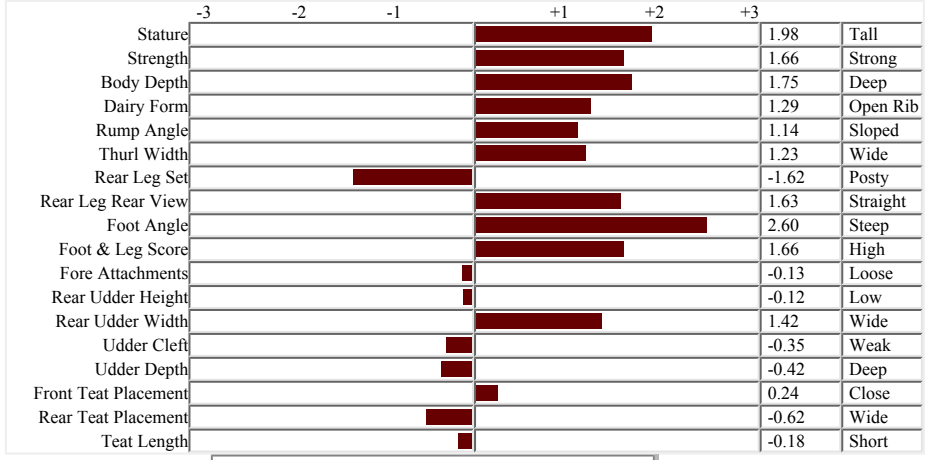
Arcadia D Dotson Doris-Sold for \$5900 Canadian\$ at the Royal

Information Provided By:

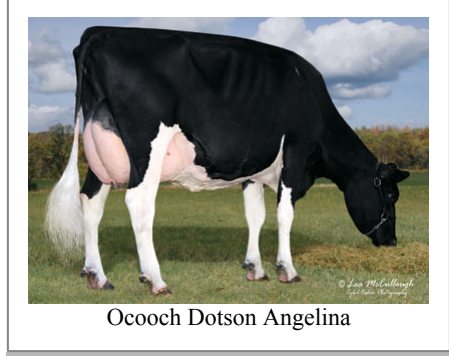


E10890 Penny Lane
 Baraboo, WI. 52913
 1.800.451.9275 (toll free)
 608.356.8357 (local & international)
 info@accelgen.com
 www.accelgen.com

Holstein/USDA Genomic Linear Profile - December 2011



Ocooch Dotson Angelina



Ocooch Dotson Angelina



Ocooch Dotson Angelina



Schrobro Dotson Mavis GP-84



Michigan Dotson Beetle VG-86



Mc Kaeding Dotson 1100 GP-83