

ALEXANDER - 014JE00472

Artist X Bold
 JEUSA000067037158
 Forest Glen Artist Alexander
 aAa: 351 DMS: 345;456

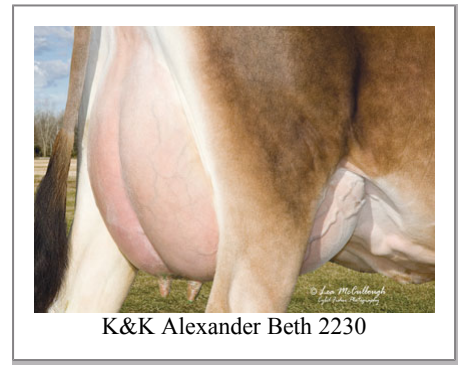
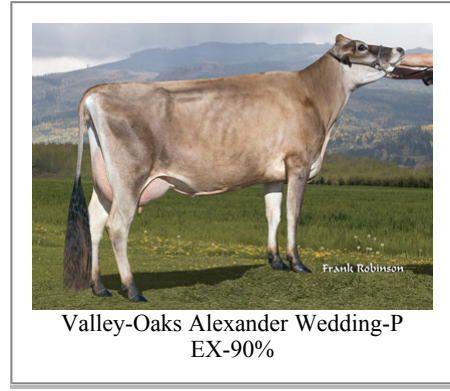


USDA SIRE GENOMIC EVALUATION Sire Summary - (12/11)

	153 Daus	81 Herds
Milk	320	94%R
Protein	18	0.04
Fat	44	0.16
Net Merit	\$436	
Fluid Merit	\$402	
Cheese Merit	\$475	

USDA SIRE GENOMIC EVALUATION Type Summary - (12/11)

	93 Daus	57 Herds		
PTAT	0.6	89%R	JPI	131
UDC	1.39			
PL	5.1	79%		
SCS	2.93	87%		
DPR	1.2	74%		
IB	5.6			



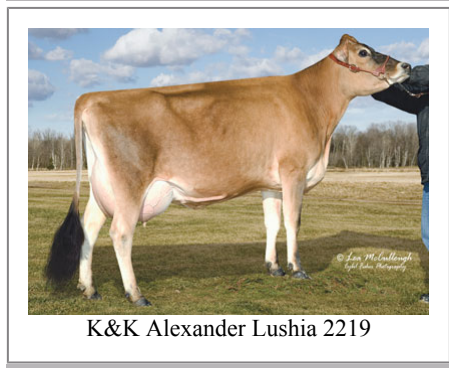
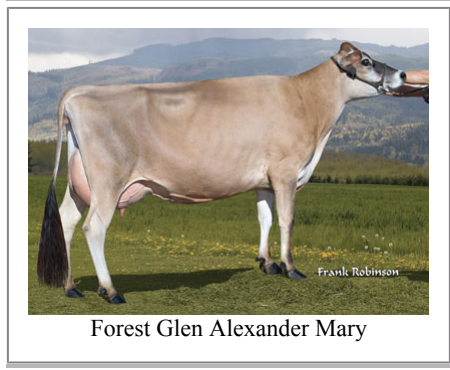
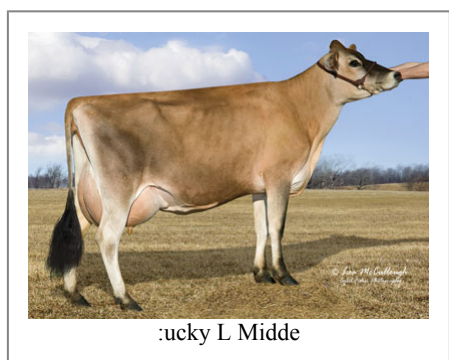
Information Provided By:



E10890 Penny Lane
 Baraboo, WI. 52913
 1.800.451.9275 (toll free)
 608.356.8357 (local & international)
 info@accelgen.com
 www.accelgen.com

AJCA/USDA Genomic Linear Profile - December 2011

	-3	-2	-1	+1	+2	+3	
Stature						-0.30	Short
Strength						-0.30	Frail
Dairy Form						0.10	Open Rib
Rump Angle						-1.50	High Pins
Thurl Width						0.00	Wide
Rear Leg Set						0.00	Sickle
Foot Angle						0.60	Steep
Fore Attachments						0.80	Strong
Rear Udder Height						-0.20	Low
Rear Udder Width						-0.10	Narrow
Udder Cleft						-0.40	Weak
Udder Depth						1.60	Shallow
Front Teat Placement						0.20	Close
Teat Length						-0.50	Short





Lucky L Bernie