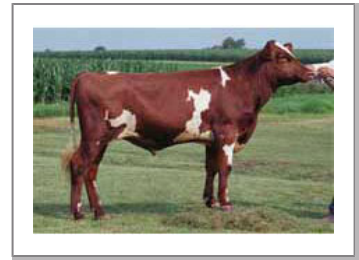


TED - 014MS00110

Vinra Glen Frost X Outlaw
 MSUSA000000450289
 Vinra Frost Ted
 aAa: 612345 DMS: 135;123



USDA SIRE EVALUATION Sire Summary - (12/11)

	223 Daus	108 Herds
Milk	556	94%R
Protein	14	-0.02
Fat	28	0.04
Net Merit	\$296	
Fluid Merit	\$307	
Cheese Merit	\$287	

USDA SIRE EVALUATION Type Summary - (12/11)

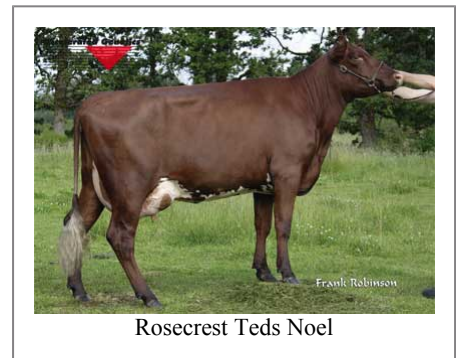
	72 Daus	31 Herds		
PTAT	0	86%R	PPR	97
PL	3	75%		
SCS	2.8	88%		
DPR	-0.3	73%		
IB	5.3			



Elm-Roc Ted Shiver



Luchterhand Ted Lexy



Rosecrest Teds Noel

Information Provided By:



E10890 Penny Lane
 Baraboo, WI. 52913
 1.800.451.9275 (toll free)
 608.356.8357 (local & international)
 info@accelgen.com
 www.accelgen.com

AMSS Linear Profile - December 2011

	-3	-2	-1	+1	+2	+3	
Stature						-2.20	Short
Strength						-0.60	Frail
Body Depth						-1.00	Shallow
Dairy Form						-0.10	Tight Rib
Rump Angle						-0.20	High Pins
Thurl Width						-0.10	Narrow
Rear Leg Set						-0.40	Posty
Foot Angle						0.20	Steep
Fore Attachments						-0.20	Loose
Rear Udder Height						0.40	High
Rear Udder Width						0.80	Wide
Udder Cleft						0.80	Strong
Udder Depth						-1.10	Deep
Front Teat Placement						1.10	Close
Teat Length						-0.90	Short